



## TRANSITING EXOPLANET SURVEY SATELLITE

Discovering New Earths and Super-Earths in the Solar Neighborhood

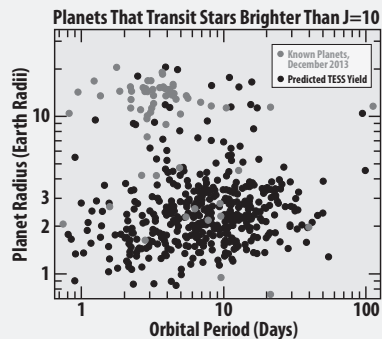
### TESS SCIENCE OBJECTIVES

#### DISCOVER TRANSITING EXOPLANETS ORBITING NEARBY, BRIGHT STARS

The **NASA Kepler Mission** showed that planets are abundant throughout the Galaxy, but most of the Kepler planets orbit stars too distant for further study. The **NASA TESS Mission** will find exoplanets transiting nearby, bright stars: the best targets for followup characterization with large ground telescopes, the Hubble Space Telescope, and the James Webb Space Telescope.

TESS is designed to:

- Monitor 200,000 nearby stars for planets
- Focus on Earth and Super-Earth size planets
- Cover 400X larger sky area than Kepler
- Span stellar spectral types of F5 to M5



TESS data, in combination with follow-up observations enabled by TESS, will allow us to observe a broad range of exoplanets around nearby, bright stars:

- **Fundamental properties:** mass, radius, orbit
- **Dynamics:** planet-planet interactions, mutual inclinations, moons, tides
- **Atmospheric composition + structure:** transmission spectrum, emission spectrum, albedo, phase function, clouds, winds

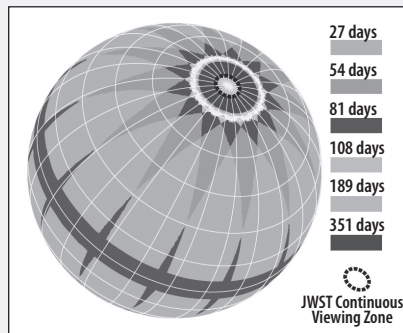
### TESS MISSION OVERVIEW

#### ALL-SKY, TWO YEAR PHOTOMETRIC EXOPLANET DISCOVERY MISSION

TESS will tile the sky with 26 observation sectors:

- At least 27 days staring at each 24° x 96° sector
- Brightest 200,000 stars at 2-minute cadence
- Full frame images with 30-minute cadence
- Map Northern hemisphere in first year
- Map Southern hemisphere in second year
- Sectors overlap at ecliptic poles for sensitivity to smaller and longer period planets in JWST Continuous Viewing Zone (CVZ)

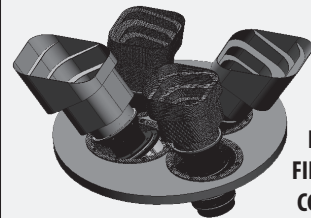
TESS 2-Year Sky Coverage Map



TESS observes from unique High Earth Orbit (HEO):

- Unobstructed view for continuous light curves
- Two 13.7 day orbits per observation sector
- Stable 2:1 resonance with Moon's orbit
- Thermally stable and low-radiation

### TESS SCIENCE INSTRUMENT

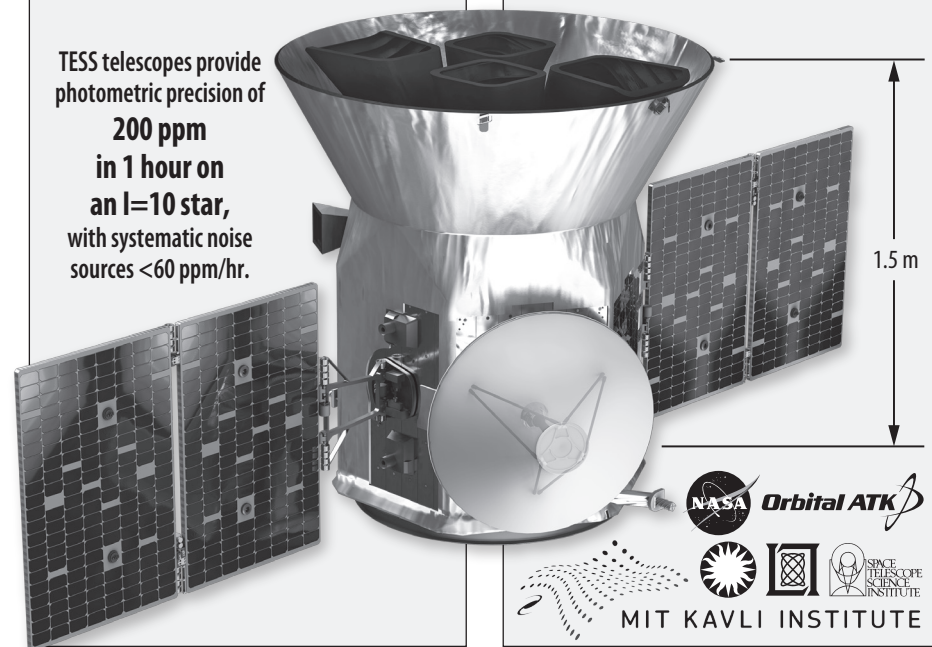


FOUR WIDE FIELD-OF-VIEW CCD CAMERAS

Each of the four cameras has:

- 24° x 24° Field-of-View
- 100 mm effective pupil diameter
- Lens assembly with 7 optical elements
- Athermal design
- 600nm - 1000nm bandpass
- 16.8 Megapixel, low-noise, low-power, MIT Lincoln Lab CCID-80 detector

TESS telescopes provide photometric precision of **200 ppm in 1 hour on an I=10 star**, with systematic noise sources <60 ppm/hr.



### TESS SPACECRAFT

#### DESIGNED FOR PHOTOMETRIC STABILITY

Orbital ATK LEOStar-2 spacecraft bus:

- 3-axis stabilized pointing, with  $\leq 3$  arc-sec performance
- Two-headed star tracker; 4 wheel zero-momentum system
- 400W single-axis articulating solar array
- Passive thermal control
- Mono-propellant propulsion system
- Ka-band 100 Mbps science downlink

**The TESS legacy:**  
a list of the closest transiting planet systems, which will forever be the best targets for followup studies.